

Ciberseguridad **SASE** para alineamiento con la Directiva NIS2



**Alberto Pérez | SASE Business Development
South Europe | alberto.perez@hpe.com**

February 2025


Today's Common Challenge

Business Happening, Everywhere

People & Things

- Home
- Office
- Restaurant
- Sensors
- Cameras
- POS
- Machines
- BYOD

Applications

- SaaS   Microsoft 365    zoom
- IaaS/PaaS    ORACLE
- Hybrid: staying on-prem in the DC

Connectivity

- Broadband
- FTTH
- Satellite
- Cellular
- MPLS



Users think security hinders performance, innovation and productivity

3/4

Business is Throttled

68%

Business leaders feel their security exposure is increasing

Business is at Greater Risk

Employee Challenges – Modern Workplace

Internet Access and SaaS Applications

- **Internet access without security or control**
- **Over 90% of Internet traffic is SSL-encrypted** including malware
- **Difficult to handle authentication** with new generation SaaS applications
- Impossible to control the **information stored in SaaS**
- Migration to SaaS apps is complex

Internal Applications Access

- **Attack Surface**
- **Least Privilege Access**
- Attaching Employees into the network
- **VPN issues**
- Traffic backhauling sub-optimal
- **Distribution / Provisioning of applications is laborious** and difficult to maintain

Employee Security without a Perimeter

- Users surfing the Internet or accessing applications **outside our perimeter are highly exposed**
- **Difference in security policy** in DC/HQ vs. Rest
- Difficult-to-manage personal information policies and **complex regulatory compliance**
- Need for **different layers of security** that are not necessarily integrated

User Experience

- **Segmented visibility** across multiple platforms and possible blind spots
- **Complex Troubleshooting**
- Differentiated performance Inside vs. Outside HQ/DC
- Difficulty integrating with support tools, experience measurement and next-generation APIs
- **Multiple user experiences depending on the Device**

Multiple devices, IoT, OT...

Enterprise Challenges

Data Security

- Inability to adequately manage all sources containing company data
- Legal issues with respect to security or compliance mandates

Application Provision and Cloud Migration

- Point to multi-point connections required
- Difficulty orchestrating multi-vendor, multi-region or hybrid applications

Contractor / 3rd Party Access

- Access to corporate applications from non-platform devices
- Difficulty or impossibility to deploy agents.
- Extranet or point-to-point VPN required

Secure IoT devices

- Highly inefficient network segmentation unable to provide security in connected IoT/OT environments
- Inability to manage differentiated roles for users and IoT/OT

Cost and Architecture

- Complex and inefficient architectures
- The network do not scale adequately, are unable to adapt and rely on protocols not ready for today's env.
- Perimeter and hardware-based security

Business Agility and Merge & Acquisition

- Need for integration of complex systems
- Working access with overlapping IP space
- Access to infrastructure needed for new employees with non-platformed PCs

Productivity

- Very low capacity to adapt to the business or service.
- Inefficient architectures highly linked to hardware renewal.
- Limited operational efficiency due to difficulties in provision, mgmt. and troubleshooting.

Visibility

- No visibility into network, apps. and user performance
- Lack of vision regarding the use of the applications
- Impossible to understand employee usage patterns to propose improvements

The regulatory landscape has made it harder to protect my business

NIST

SOC2

ISO 27001 / 27002

NIS2

Common
Criteria

ENS

DORA

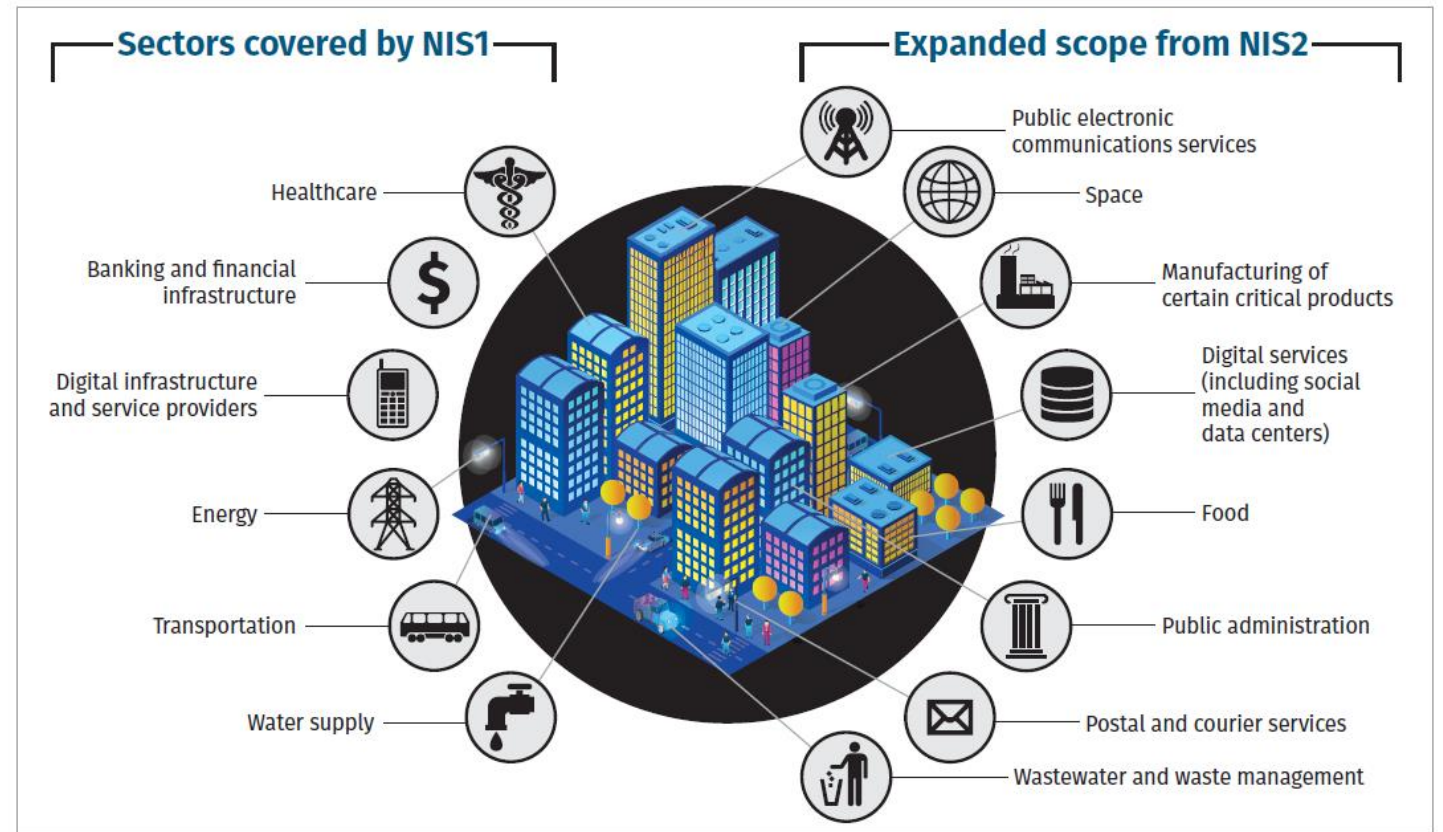
NERC-CIP

GDPR

FISMA

HIPAA

EU NIS 2 Scope- Essential and Important Entities – 50+ employees / 10M€+
(1 Million + enterprises and administrations are directly or indirectly are impacted)



Source: SANS Institute

Figure 4. NIS2 In-Scope Sectors

** Fines of a maximum of at least 10 M€ or 2 % of the total worldwide annual turnover = GDPR*



**National Cyber Strategy/
EO14028**



EU NIS 2



EU DORA

**Improve security architecture with
Zero Trust, Dynamic Segmentation &
MFA**

3

Risk management and ownership

2

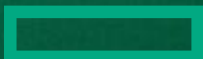
Incident reporting guidelines

Threat intelligence sharing

Secure supply chain

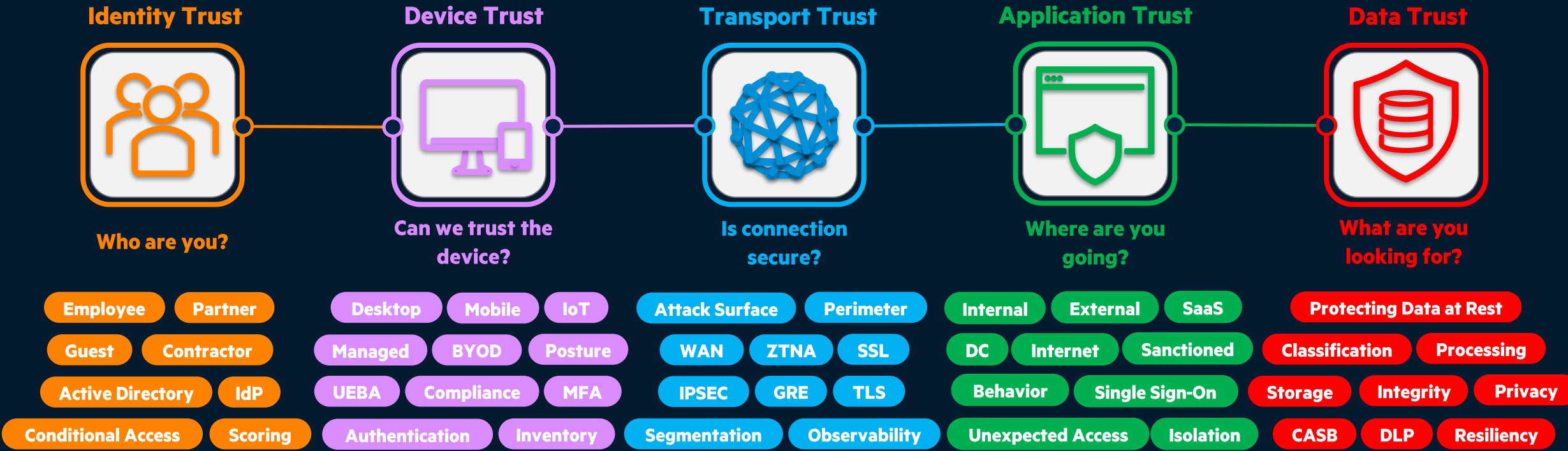
1

Resilience testing/recovery planning



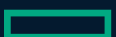
Activating Zero Trust principles intrinsically across all networking

Zero-trust security is a framework built around the concept of least-privileged access, in which no user or application should be inherently trusted.



Zero Trust Security

Zero Trust principles cannot be applied to islands of innovation. A holistic approach is mandatory

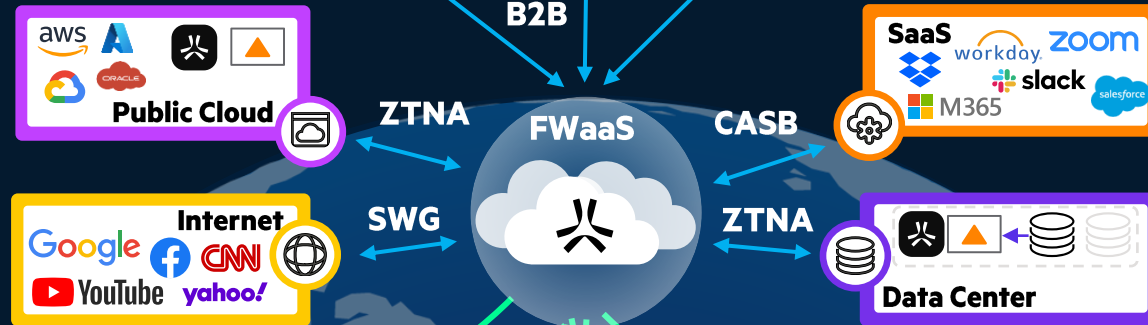


Zero Trust Security

Unified SASE

Multi-Cloud Native
SaaS Platform

- Identity-based Least-Privilege Access
- Micro-Segmentation & Consistent Enforcement
- Continuous Monitoring



Remote Worker

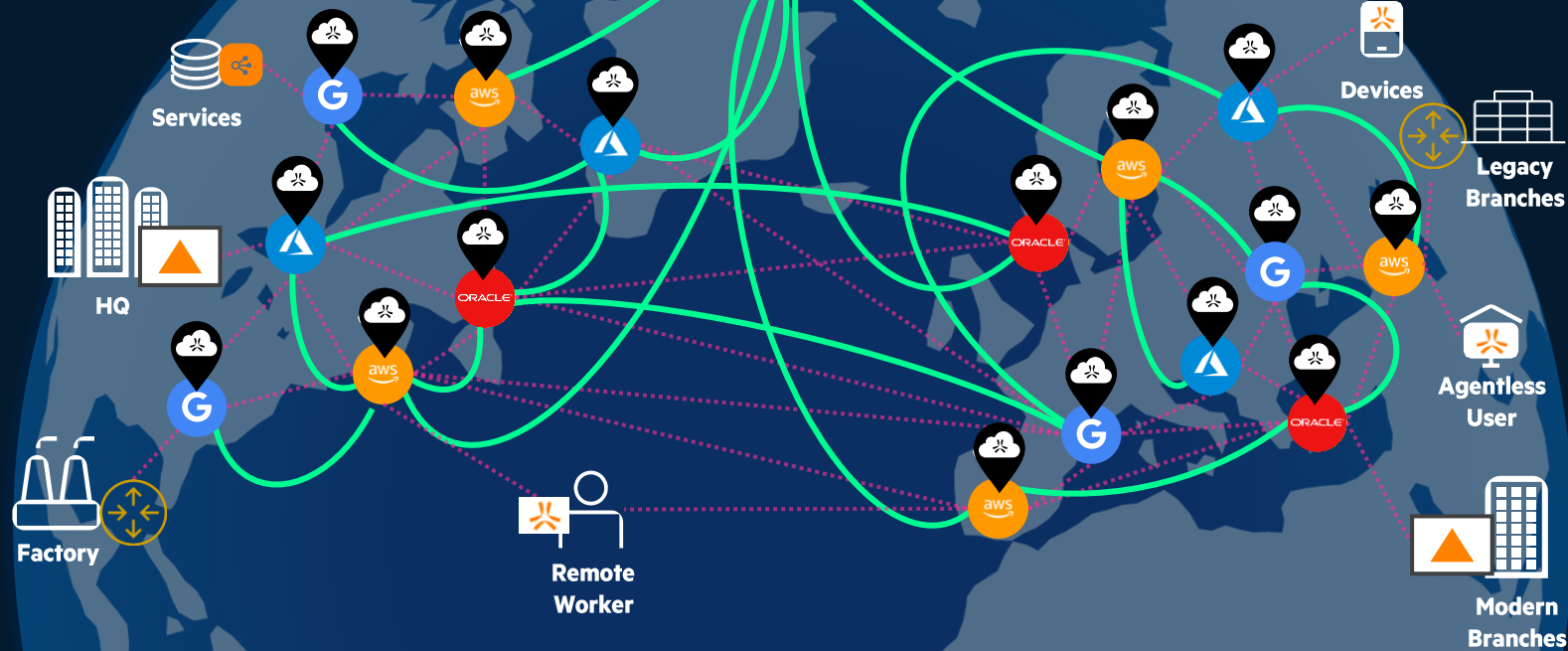
- Agent / Agentless
- All OS Supported
- Unlimited Traffic
- Unlimited Devices
- SDWAN Embedded
- All PoPs Included

Legacy Branch

- Legacy Router / FW Onramp
- IPsec Integration
- ZTNA / SWG / CASB Services

SDWAN

- Business Intent Overlays
- SD-WAN Fabric Orch.
- Path Conditioning and QoS
- App visibility and control
- Zero Trust segmentation
- Advanced crypto
- Zero Touch Configuration



Transformation Journey with **HPE** aruba networking

Stream 1:

**Smart Digital
Workplace**



Stream 2:

**Zero Trust
Remote Access**



Stream 3:

**Twist Security to
Employee Focus**



Stream 4:

**Network Modernization
Multi-Cloud, Branch & Edge**



Stream 5:

**Reimagine Desktops & Apps
with RBI**



Stream 6:

**Expanding Security
Capabilities**



Stream 7:

**CI/CD, AIOps, Automations
and Integrations**



Stream 8:

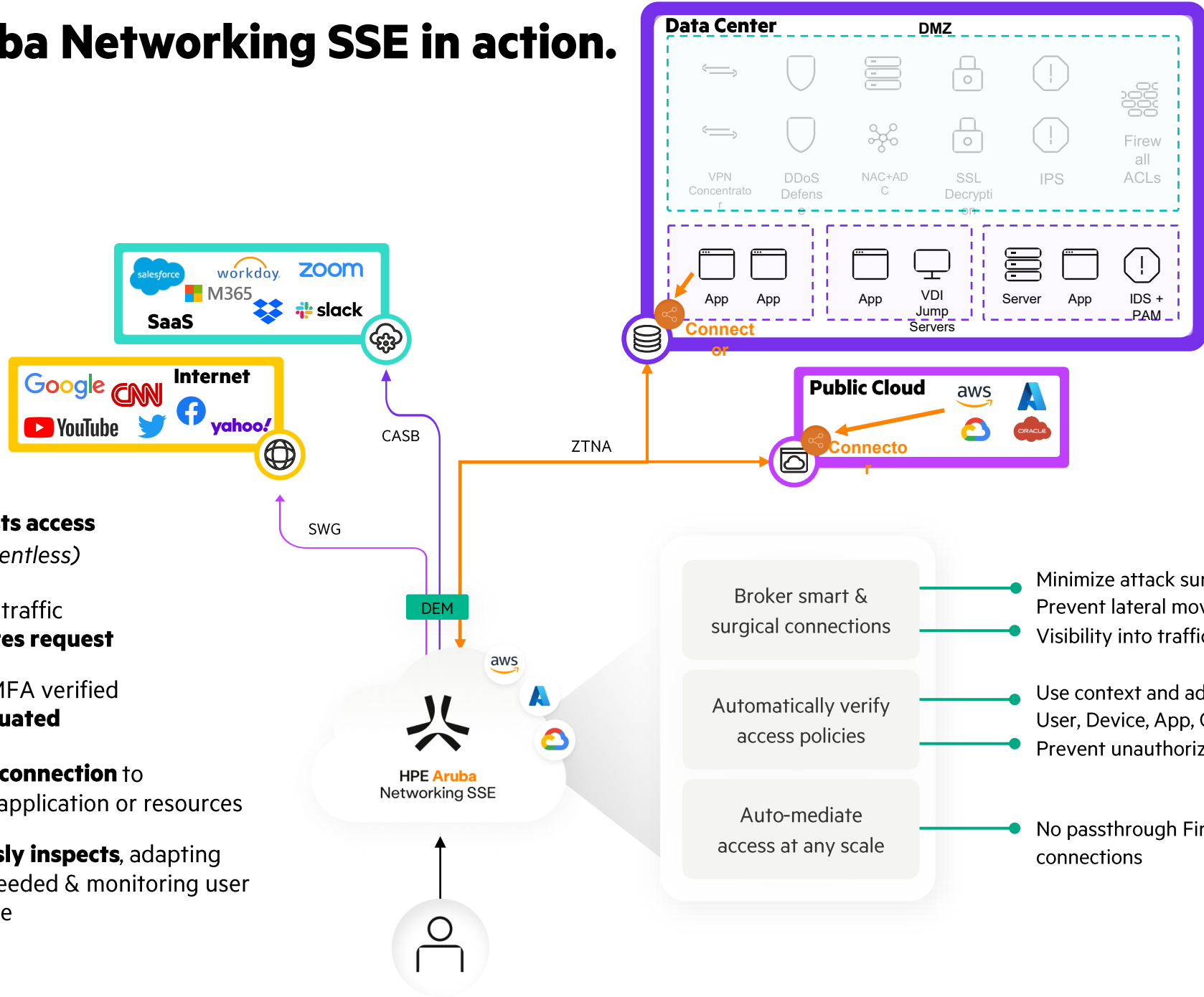
**Improving the User
Experience in 360°**



Select where your journey begins

	VPNs	ZTNA 1.0	Aruba ZTNA
• Keep Users Off The Network	-	+	+
• Reduce attack surface of infrastructure	-	+	+
• DDoS proof Private Apps	-	+	+
• Application Discovery	-	+	+
• Agentless Web, SSH, RDP, Git, DB, VNC Access	-	-	+
• Full SSE Inspection/ Continuous Authorization / Visibility	-	-	+
• Per app segments, User group pairing	-	-	+
• Any Port / Protocol (P2P / VOIP, AS400, etc.)	-	-	+
• Server Initiated Flows / Push Patching	-	-	+
• Multi-cloud PoP resilience	-	-	+
• Smart Routing for ZTNA Connectors	-	-	+
• IPsec Tunnels for ZTNA	-	-	+
• Local Edge Private POP	-	-	+

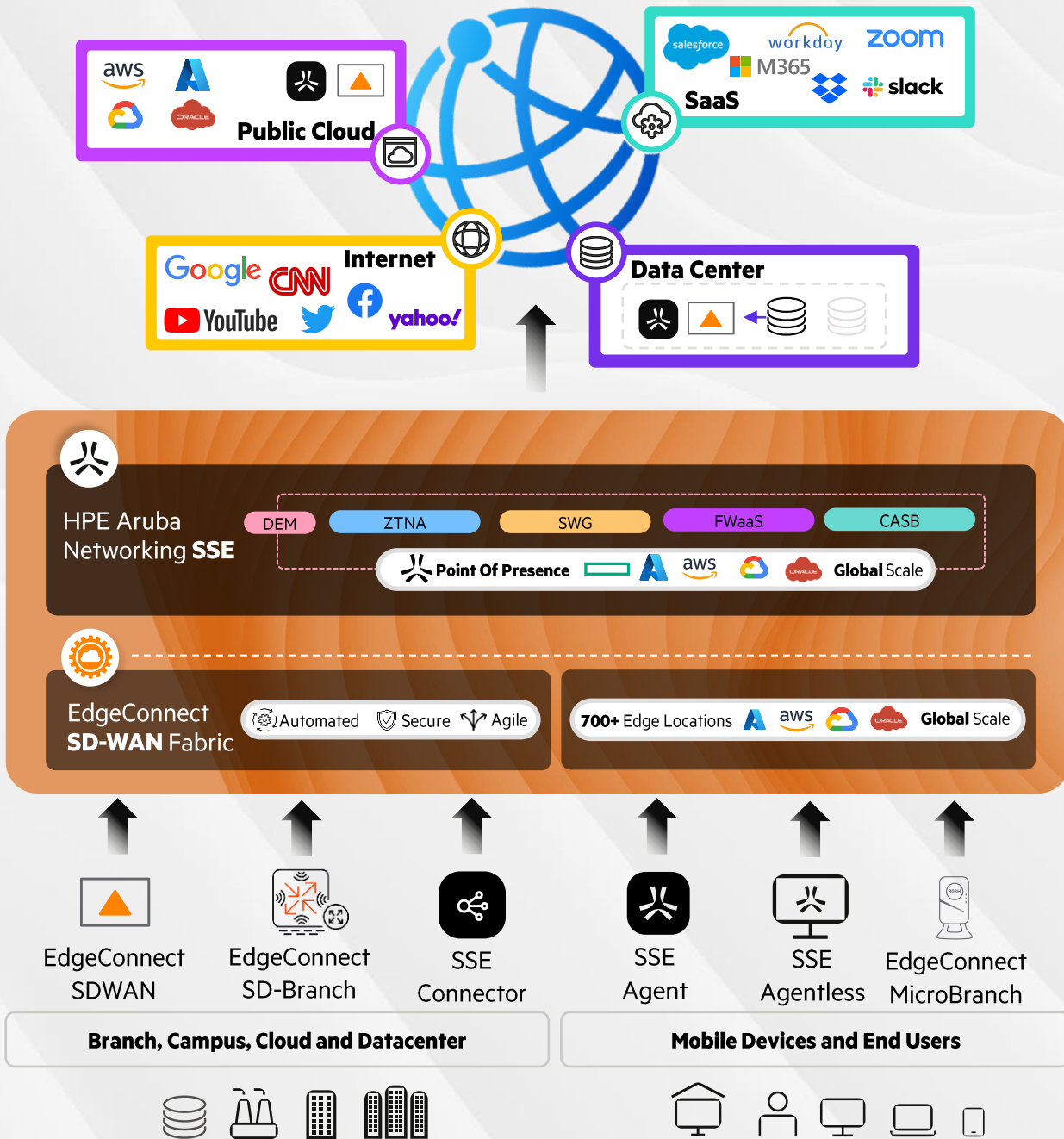
HPE Aruba Networking SSE in action.



The invisible network
Application access,
never network access
Granular least privilege access.

- 1 **User requests access**
(agent or agentless)
- 2 Auto-route traffic and **mediates request**
- 3 Identity + MFA verified
Policy evaluated
- 4 **Broker 1:1 connection** to authorized application or resources
- 5 **Continuously inspects**, adapting access as needed & monitoring user performance

- Broker smart & surgical connections
 - Minimize attack surface: Prevent lateral movement
 - Visibility into traffic
- Automatically verify access policies
 - Use context and adaptive access: User, Device, App, Content
 - Prevent unauthorized Access
- Auto-mediate access at any scale
 - No passthrough Firewall / VPN connections



HPE **aruba** networking **Unified SASE**

Multi-Cloud Native SaaS Platform

+Secure
360° Security

+Simple
Easier to Deploy & Operate

+Productivity
Frictionless User Experience in any Use Case

SDWAN

- ✓ Virtual Overlay Architecture (BIOs)
- ✓ Per Packet Traffic Management
- ✓ Path Conditioning
- ✓ High Scalability & Resiliency
- ✓ Cloud Native Integration (IaaS/PaaS)
- ✓ SaaS Performance Enhancement
- ✓ Real Time Visibility
- ✓ Advanced Routing (BGP, OSPF)
- ✓ ZTP

Security

- ✓ Certified Stateful Firewall (L3-L7)
- ✓ DDoS defense
- ✓ Zero Trust Segmentation
- ✓ VRF Segmentation
- ✓ Automated SSE Orchestration

Add-On

- ✓ WAN Optimization
- ✓ Dynamic Threat Defense
- ✓ Multitenant Orchestrator
- ✓ On-prem Airgap Solution

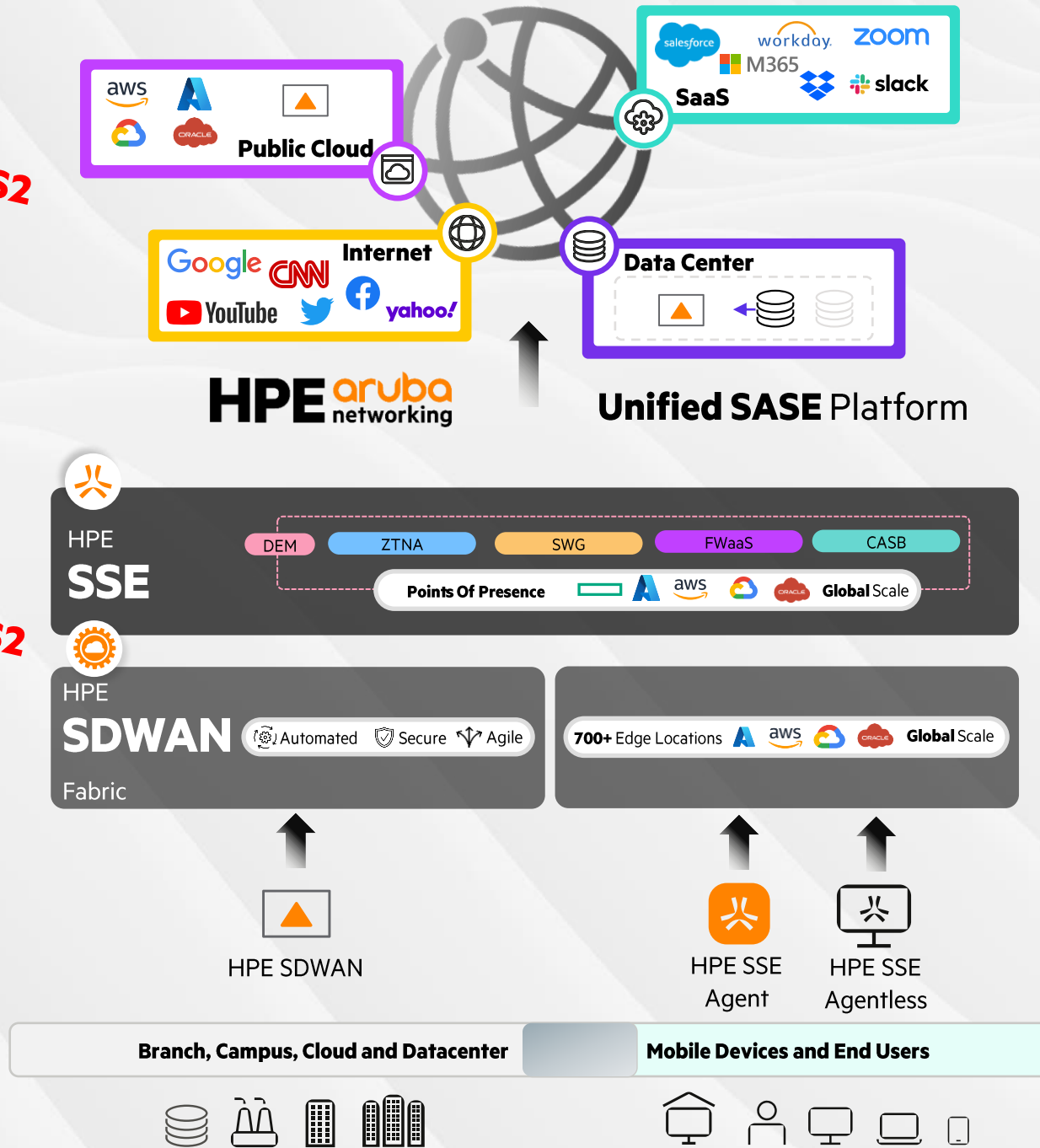
«« NIS2

«« NIS2

«« NIS2

«« NIS2

«« NIS2



Private Data

- ✓ Zero Trust Network Access
- ✓ Agentless
- ✓ Discovery

«« NIS2

External Data

- ✓ FWaaS
- ✓ Secure Web Gateway
- ✓ CASB
- ✓ Advanced DLP
- ✓ Malware Scan

«« NIS2

«« NIS2

«« NIS2

Operations

- ✓ Dashboard
- ✓ Agent
- ✓ IDP
- ✓ MCN
- ✓ Digital Experience Monitoring
- ✓ Local Edge
- ✓ Server to Server

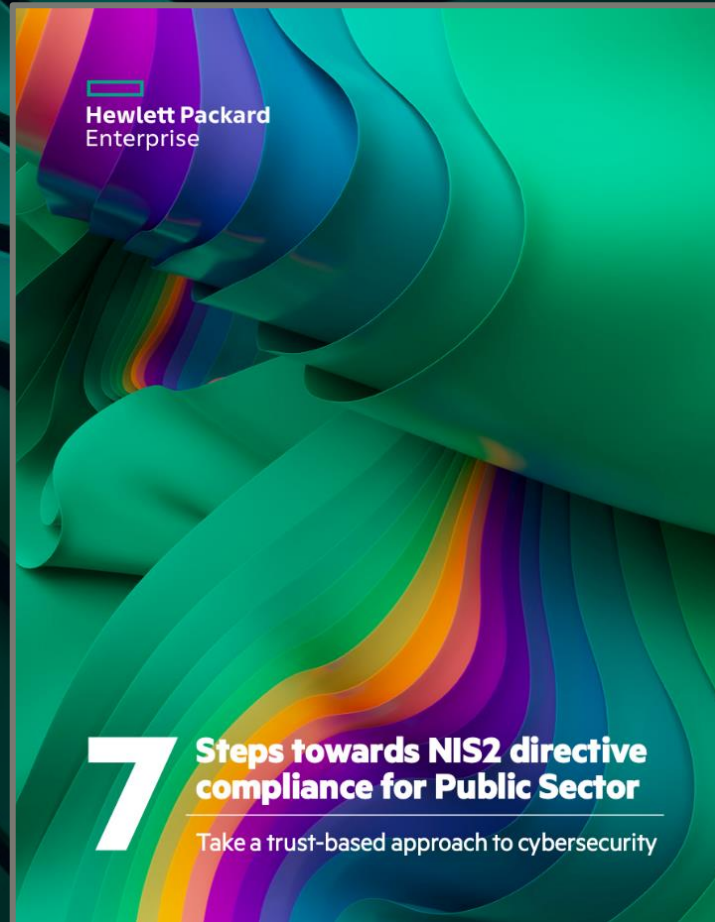
«« NIS2

Add-On

- ✓ Sandbox Security Package

«« NIS2

Helpful documents



<https://www.hpe.com/psnow/ebook/306180d2-4609-4110-b476-b7beb01f3677>

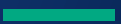




Hewlett Packard
Enterprise

HPE aruba
networking

Thank you



```
..._mod.use_x = False
..._mod.use_y = True
..._mod.use_z = False
... == "MIRROR_Z":
..._mod.use_x = False
..._mod.use_y = False
..._mod.use_z = True

... at the end -add back the deselected
..._ob.select= 1
..._ob.select=1
...context.scene.objects.active = modifier_ob
... "selected" + str(modifier_ob) # modifier
..._ob.select = 0
...context.selected_objects[0]
...objects[one.name].select = 1

print("please select exactly two objects,
OPERATOR CLASSES -----
```