

**Hewlett Packard
Enterprise**

HPE Redes y Ciberseguridad, pilares TIC en la transformación de las AAPP de Madrid.

Transformación Digital, Transformación del Modelo de Conectividad & Ciberseguridad



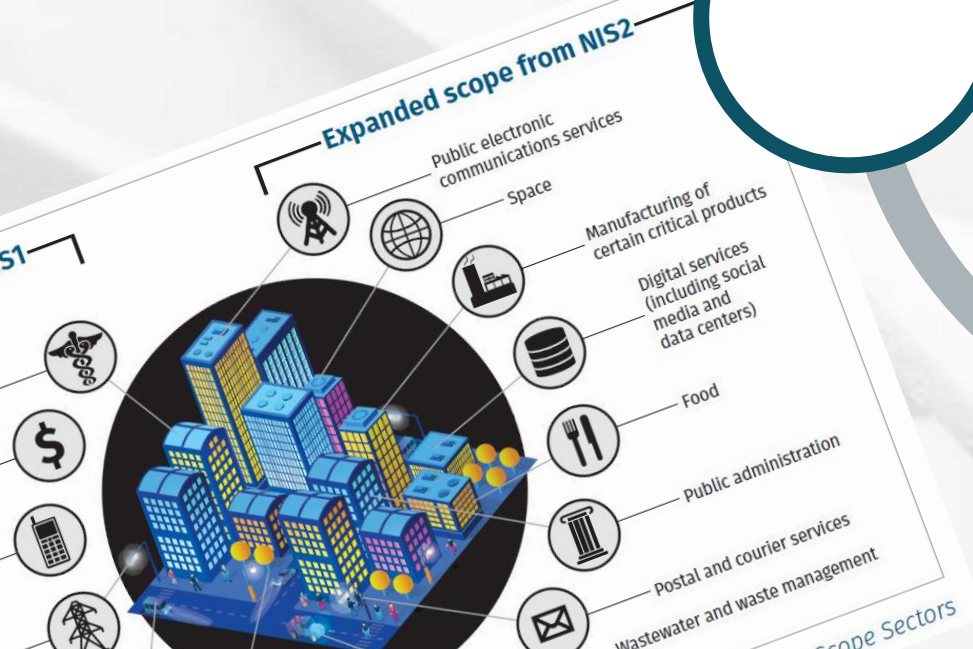
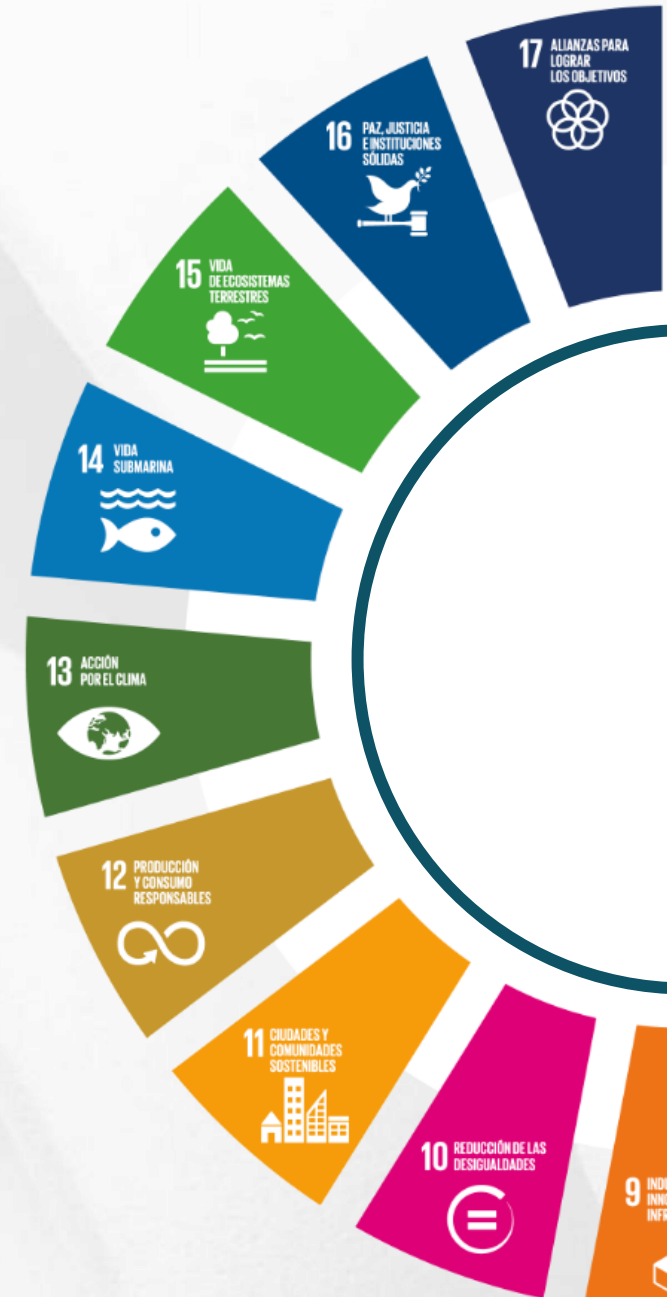
**Alberto Pérez | SASE Business Development
South Europe | alberto.perez@hpe.com**

November 2024 / HPE FY25



Disrupciones Tecnológicas, Agenda 2030 y Ciberseguridad

En el año 2015 todos los Estados miembros de la Organización de las **Naciones Unidas** (ONU) aprobaron la Agenda 2030 para el **Desarrollo Sostenible**, un plan de acción a favor de las personas y el planeta en el cual se engloban los 17 ODS.



Las Claves de la Transformación y sus Retos

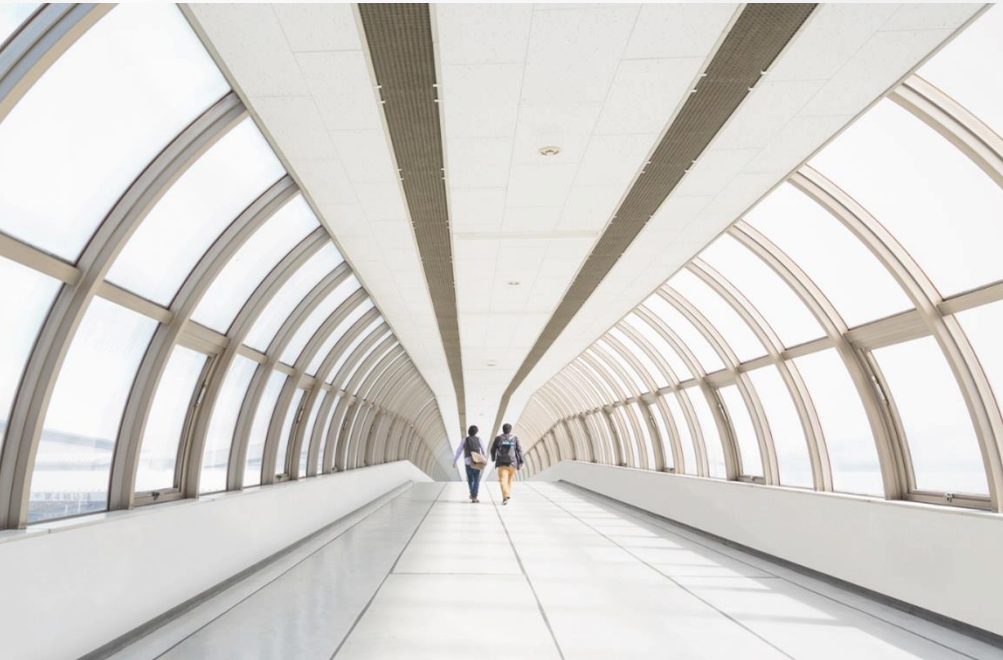
La Transformación también nos traerá **Nuevos Retos**

**Nuevas
Amenazas**

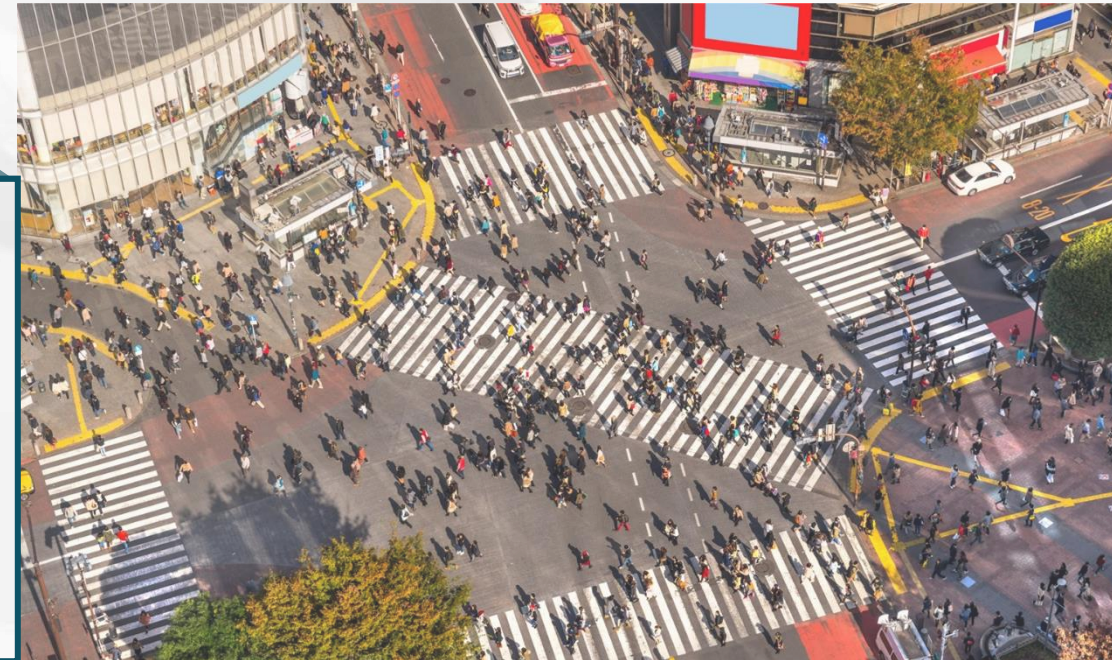
**Renovación de
Infraestructuras**

**Talento
Digital**

El Camino ya se ha Iniciado



Anyone
Anything
Anyplace
Anytime
Anyhow



Networking and Security evolution

HPE Aruba SASE



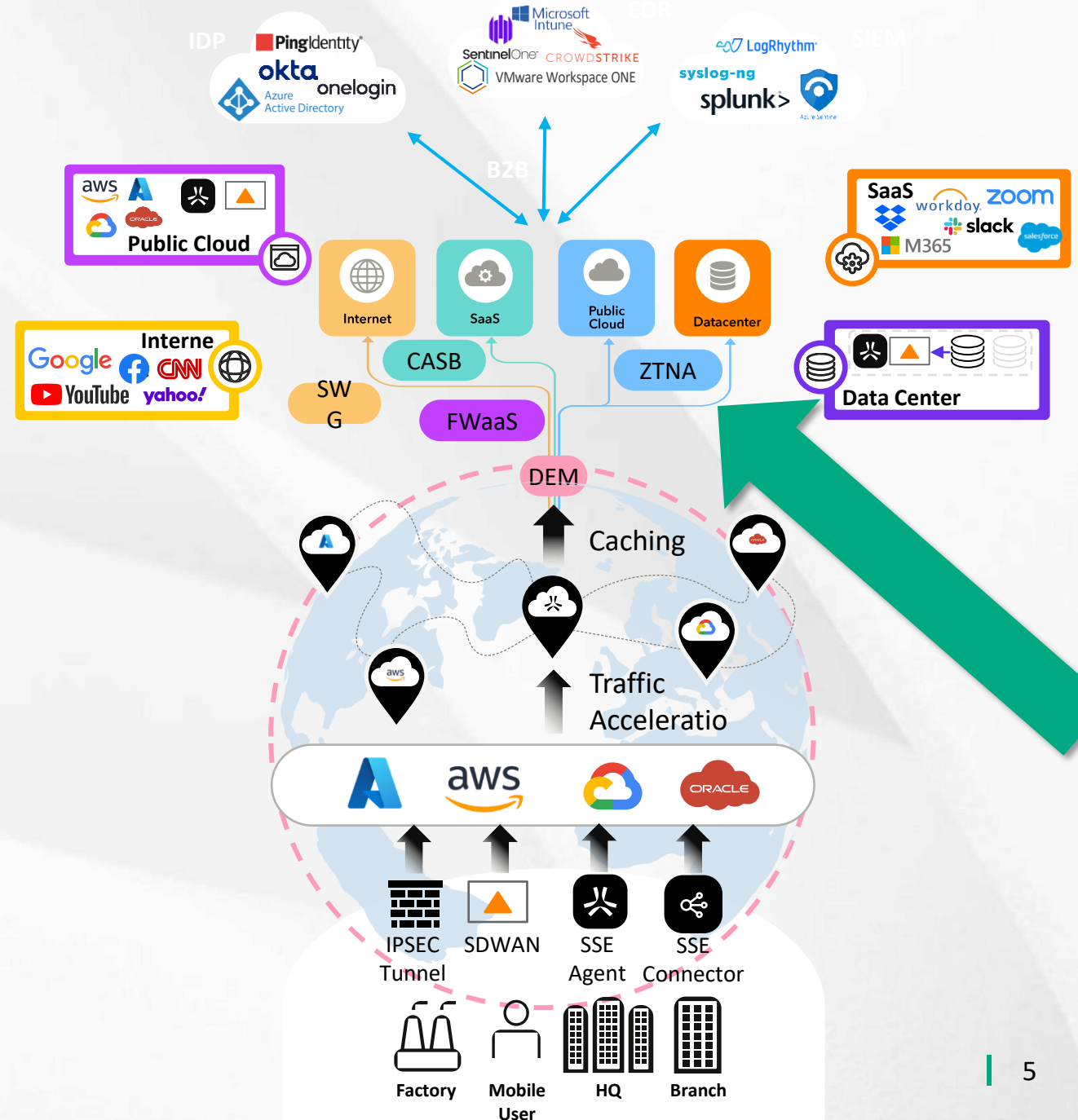
Unified access platform

Simplify policy & Inspect traffic for ALL KIND OF APLICATIONS

SASE architectures: fully automated as a service

Worldwide cloud-backbone of AWS, Azure, Google and Oracle

Users access to resources WITH or WITHOUT Agent



HPE Aruba Networking approach to Zero Trust and SASE

Apply zero trust security controls to protect users and applications, no matter where they connect

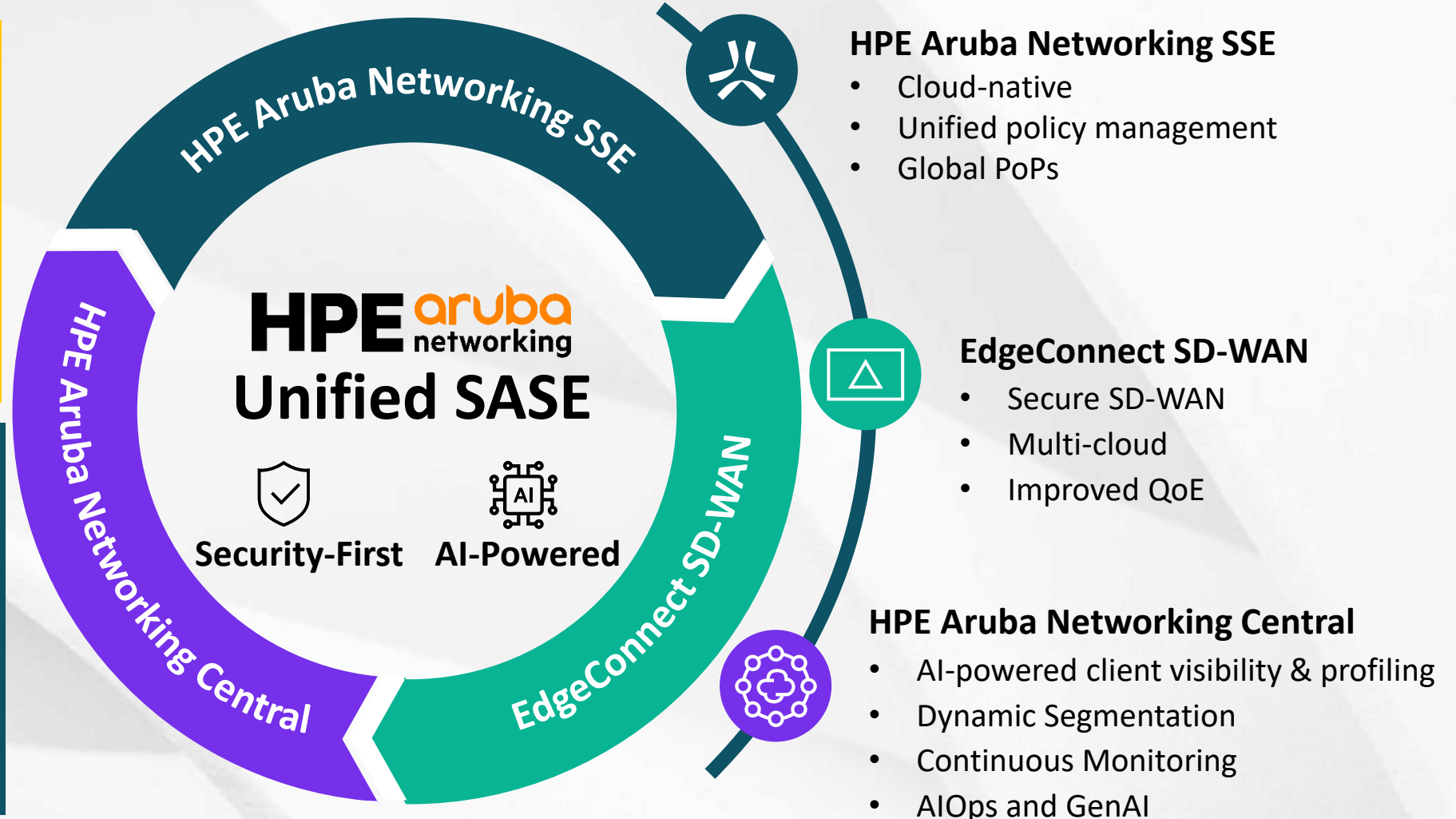
Network access control

Configure user and device access to network resources based on security and compliance requirements.



Network segmentation

Segmenting a network into smaller parts makes it more secure and easier to manage



AI Ops For Improved Troubleshooting And Issue Resolution

Automation Reduces MTTR, Increases IT Efficiency

POWERFUL FEATURES

AI Search

Natural language queries for fast onboarding & troubleshooting

Network Insights

Proactive network anomaly detection and optimization

AI Assist

Automated Aruba TAC trouble ticket generation

Client Insights

Accurate IoT profiling to drive capacity planning & security policies

Application Insights

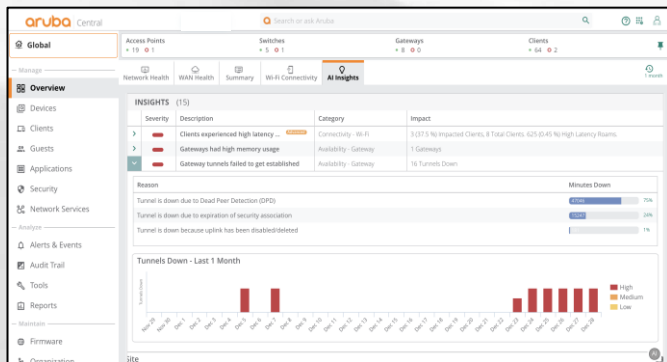
Automated application-level performance monitoring

Wi-Fi, Wired, WAN Infrastructure: Planning, Setup, Troubleshooting & Optimization

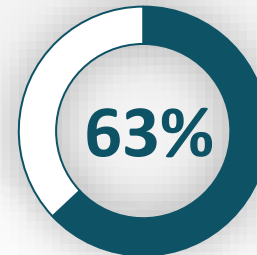
Security: Profiles / Behavior

User: Application / Connectivity

POWERFUL RESULTS

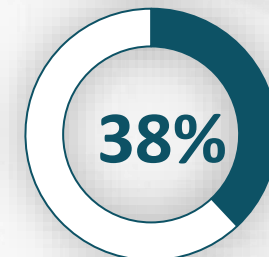


Faster MTTR



Of surveyed customers resolve network or user issues at least **50% faster**

Fewer Support Tickets



Of surveyed customers have reduced IT trouble tickets by at least **50%**

Transformation Journey with **HPE** aruba networking

Stream 1:
**Smart Digital
Workplace**



Stream 2:
**Zero Trust
Remote Access**



Stream 3:
**Twist Security to
Employee Focus**



Stream 4:
**Network Modernization
Multi-Cloud, Branch & Edge**



Stream 5:
**Reimagine Desktops & Apps
with RBI**



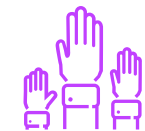
Stream 6:
**Expanding Security
Capabilities**

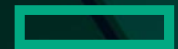


Stream 7:
**CI/CD, AIOps, Automations
and Integrations**



Stream 8:
**Improving the User
Experience in 360°**





**Hewlett Packard
Enterprise**

Muchas Gracias

Alberto Pérez | alberto.perez@hpe.com



SOCINFO
sociedad de
la información **digital**