



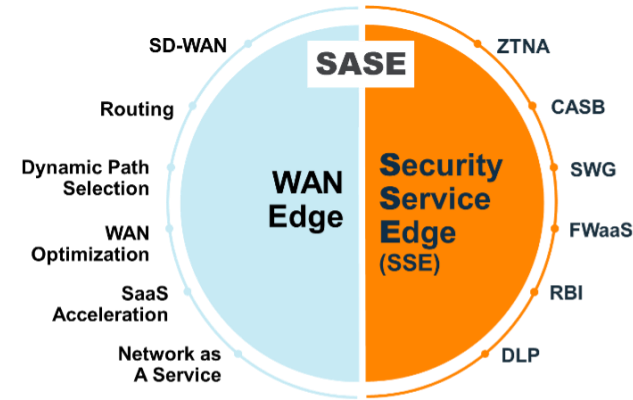
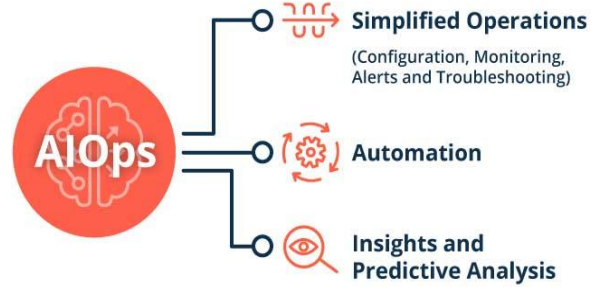
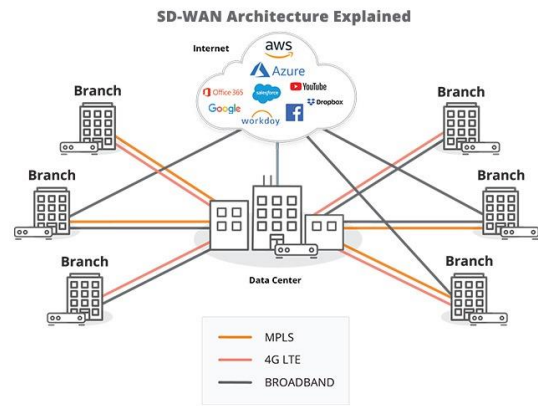
Hewlett Packard
Enterprise

Redes y Ciberseguridad, pilares TIC en la transformación de las AAPP de Cataluña

David Galindo
Territory Manager

FEB 2024

5 Key Enterprise Networking Trends (IDC 2023)



Wireless First Networking with WiFi 6E becomes de-factor
Private LTE/5G for WAN

A unified platform for LAN, WLAN, SD-Wan and Security

ML & AI enhanced automation increases in functionality

SASE with integrated security

Network as a service (NaaS) as a consumption model



OUR STRATEGY



Where to get started with Security-First Networking

Quick bursts of value
Built for heterogenous vendor environments

Modern Cloud Security

- Fast remote secure access, VPN replacement (ZTNA)
- Protect users from web-based threats (SWG)
- Prevent data loss, enforce corporate policy (CASB)

SD-WAN Modernization

- Support cloud-first initiatives
- Replace branch firewalls and routers
- Improve app performance, security, IoT devices

SASE Initiative

- Secure, hybrid work architecture
- SD-WAN and SSE from a single vendor

Campus Network Transformation

- Consolidated SSE
- Modern, unified infrastructure
- Industry-leading connectivity for all users and things
- AI-powered network and security operations

Data Center Network Modernization

- Streamline and reduce complexity
- Leverage DPU-enabled switches

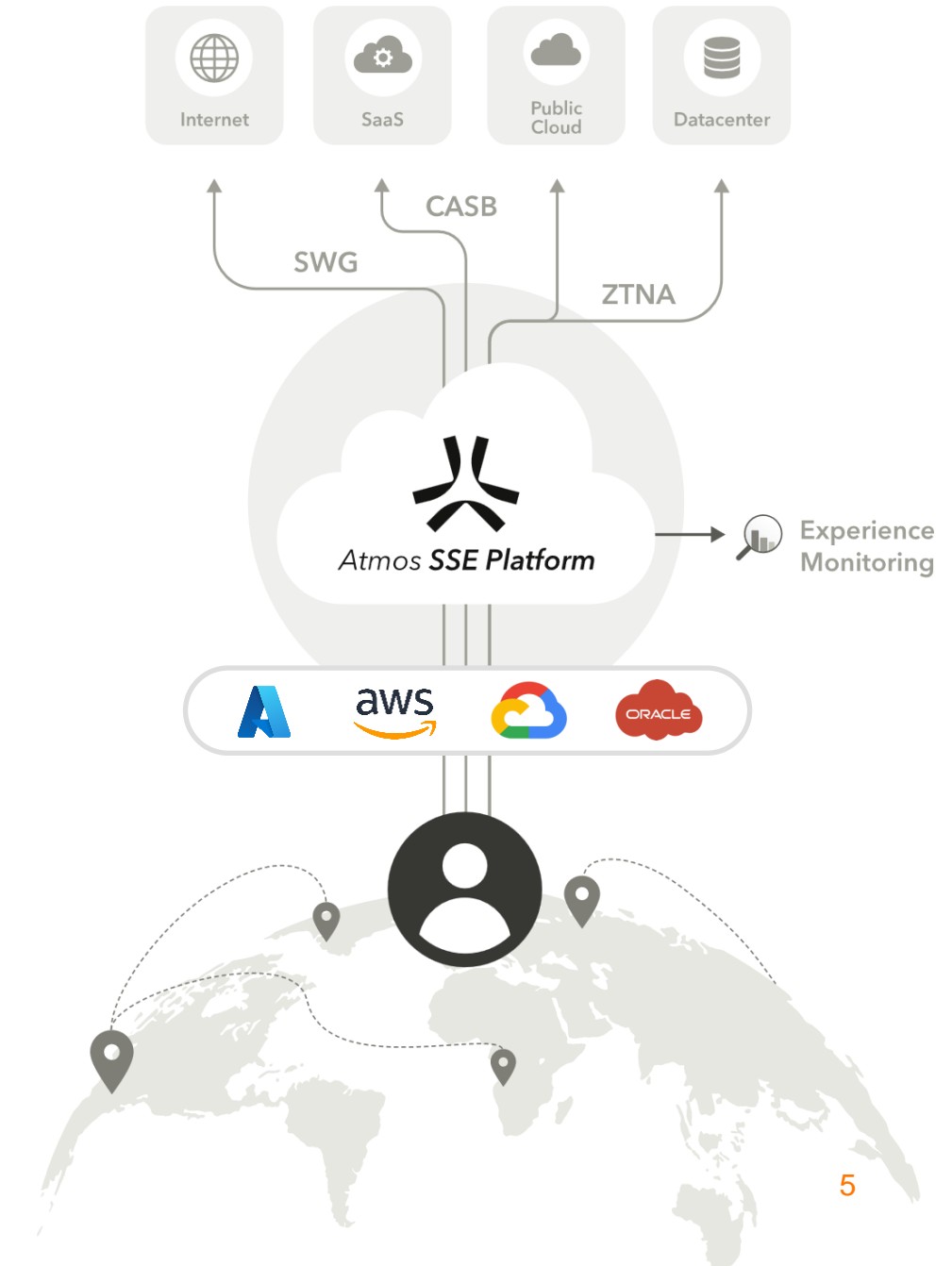
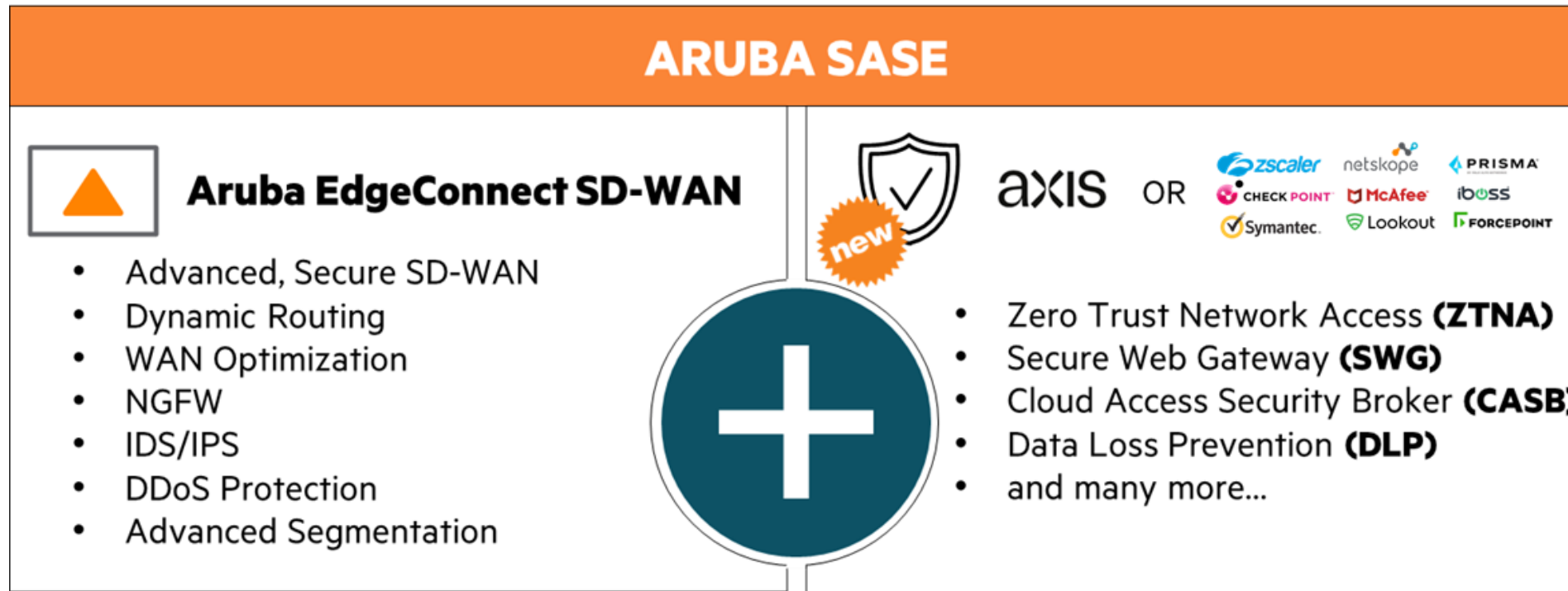
NAC-Driven Segmentation

- Define centralized role-based policies
- Dynamically enforce across, wired, wireless, and WAN networks

Security is Racing Against a Dissolving Perimeter

Users Are Everywhere, Accessing Applications Anywhere

Axis Security Acquisition forming full SASE solution



WI-FI SWITCHING SD-WAN DCN SASE

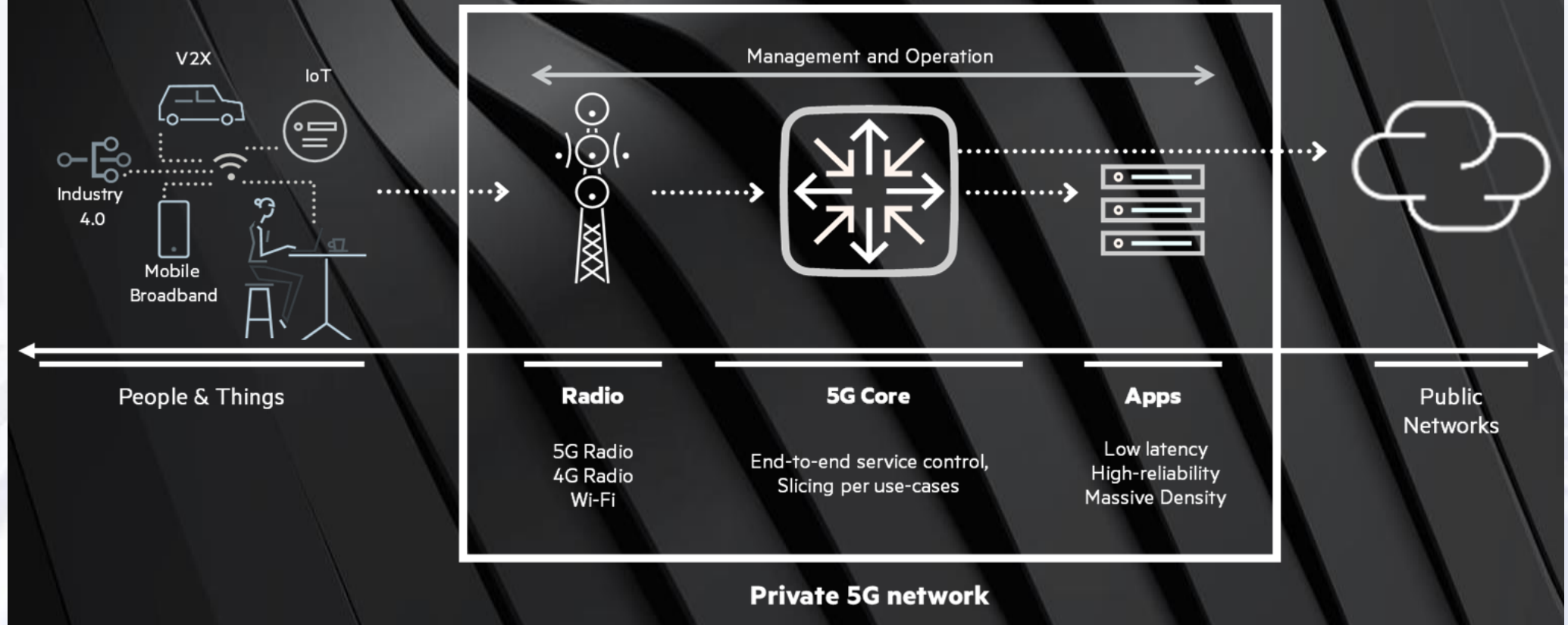
P5G

PLATFORM



**Powering
the world's
Private 5G Networks**

Super-performing standalone Private 5G Network
Multifuture-proof, IT friendly, Easy-to-use and Secure Networks



NET

HPE GREENLAKE CENTRAL / AI PLATFORM

Introducing AI Powered Next-Generation Central

230K
CUSTOMERS

2.7M
DEVICES

200M
CLIENTS



HPE aruba networking Central Intelligent Edge Platform

SITE
Acme Store 019334
Network and connectivity information about this site.

Health

- 2 applications are unreachable.
- Configuration deployment issue affecting 12 devices.
- Suboptimal wireless coverage on Floor 3.

Usage

Events

Occurred	Category	Event
Today at 13:56	Connectivity	Client PoE re-negotiation
Today at 10:25	Connectivity	Client 802.1x RADIUS timeout
Today at 8:52	RF	Radio interference
Today at 8:03	Security	Client DHCP timeout
Yesterday at 23:34	Infrastructure	Device restarted

AGILE NAAS IS ABOUT CHOICE

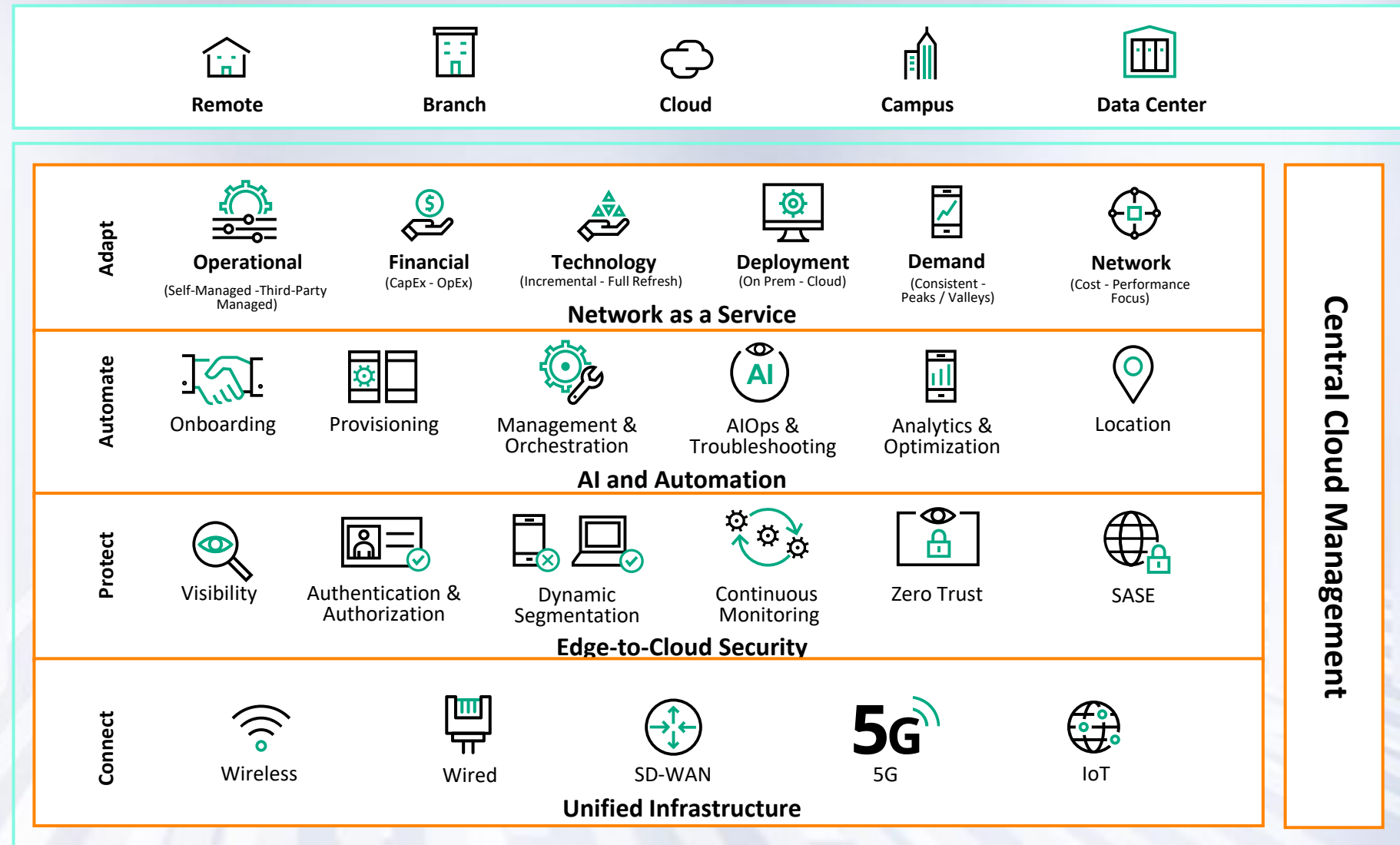
Deliver innovative business outcomes by leveraging new ways to consume, deploy and manage networks.



**THIS IS ALL
DELIVERED BY**

ARUBA ESP

**THE UNIFIED
ARCHITECTURE
FOR NETWORK
MODERNIZATION**



ARUBA EDGE SERVICES PLATFORM

YOUR “BUSINESS OUTCOME” NETWORK

								
CERTIFIED Wi-Fi 6E SOLUTION	AI DRIVEN AUTONOMOUS WIRED	EDGECONNECT SD-WAN	SECURED REMOTE ACCESS	COMPLETE USER & DEVICE SECURITY	SUSTAINABILITY	IDPS ECURITY	ARTIFICIAL INTELLIGENCE	ALWAYS ON NETWORK

 RETAIL	 SOCIAL WIFI CONNECTION	 ROI CAMPAIGNS	 ACCURATE FOOT FALL	 STAFF / CUSTOMER ENGAGEMENT	 REAL TIME INTELLIGENCE & ACTION	 DIGITAL SHELF LABEL	 DIGITAL MENU	 CUSTOMERS DIGITAL CHANNEL
 HOSPITALS & CLINICS	 INFANT TRACKING	 ASSET TAGS	 NURSE CALLING	 IOT SECURITY	 SPACE MANAGEMENT	 ASSET THEFT ALERT	 DOOR LOCK MANAGEMENT	 ROOM MANAGEMENT
 BSFI & ENTERPRISE	 DIGITAL RECEPTION	 MEETING ROOM BOOKING	 SECURED CUSTOMER ACCESS	 FACILITY MANAGEMENT	 DESK & SPACE MANAGEMENT	 SURVEILLANCE INTEGRATION	 ATM SECURITY INTEGRATION	 DIGITAL CONCERGE FACE RECOGNITION
 MANUFACTURING	 IOT USE CASES	 IT & OT INTEGRATION	 SENSOR DETECTION	 HAZARDOUS LOCATIONS	 ROBOT CONNECT ROAMING	 WIRELESS MESH	 PRIVATE 5G	 EMPLOYEE SAFETY



Thank You

www.community.arubanetworks.com